

Multi-View
2048x2048@60Hz

QSK-AERO10⁺



Aerospace 4 Port DisplayPort KVM Switch with Seamless Switch, Multi-View, Audio, Serial

► Specifications

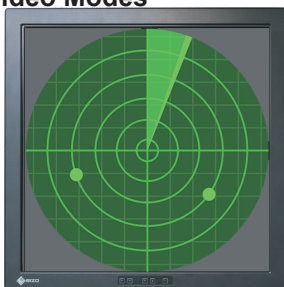
Model	QSK-AERO10 ⁺	
MAX. Video Resolution	2048x2048@60Hz (4:4:4)	
HDCP Compliance	HDCP 1.4	
Console Interface	USB 2.0	USB-A x 2
	USB HID	USB-A x 2 (Keyboard / Mouse)
	Monitor	DisplayPort x 1 (Out)
	3.5mm Audio	Speaker Jack x 1 (Out) Microphone Jack x 1 (In)
	Serial	DB-9 x 1 (DTE)
Computer Interface (4-Port)	USB 2.0	USB-B x 4 (to Host PCs)
	Monitor	DisplayPort x 4 / HDMI x 4 (In)
	3.5mm Audio	Speaker Jack x 4 (In) Microphone Jack x 4 (Out)
	Serial	DB-9 x 4 (DCE)
Video Modes	Single Area	Full-Screen / Quad-View (2048x2048 / 3840x2160)
	Dual Area	PbP / 1+3 PbP (3840x2160 / 4096x2160)
Control Methods	Push Buttons	Port x 4, View Configuration x 4
	KB Hotkey	Yes
	Hot Mouse Key	Yes, 4-Key or 5-Key Mouse Required
	MS Roaming	Yes, Enabled by KB Hotkey
Serial Control	RJ-11 x 1 (8-Bands Baud Rate Selection) (9600~115200bps, Default = 19200bps)	
Seamless Switch	Yes (<1 second)	
LED Indicators	PC Ready x 4, PC Selected x 4, Status x 1	
Power Supply	100~240V AC (Built-In Power Adaptor)	
Operation Environment	0~50°C, Humidity<80% (Storage : -20~70°C)	
H x W x D (mm), Weight (g)	44 x 440 x 180 (1U), 2000	
Material	Metal	

► Features

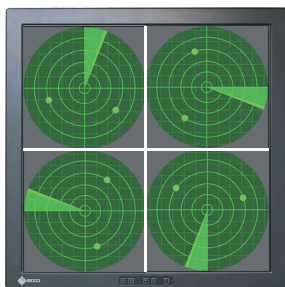
- Allows 4 Computers Sharing 1 Set of KVM Console
- Supports Aerospace Resolutions of 2048x2048 @60Hz (4:4:4)
- Multi-View Modes Allows Flexible Monitor Arrangement :
 - Single Area (Full-Screen / Quad-View)
 - Dual Area (PbP / 1+3 PbP) (4K Monitor Only)
- Allows Showing Views on Either 2048x2048 Monitors or Standard 4K Monitors
- Seamless Switch among 4 Computer Ports (<1 Second)
- Flexible Control Methods Ensures Easy Control in Various Scenarios :
 - **Push Button Control** Allows Fast View Configuration
 - **Keyboard Hotkey** for Switching and Other Functions
 - **Mouse Roaming** Empowers Easy Switching
 - **Hot Mouse Key** Facilitates Easy Switching in the Cases where Mouse Roaming Is Not Applicable
 - **Serial Control** Facilitates Industrial Control Application (with 8 Baud Rate Selections to Suit Various Systems)
- HDCP Engine Always Emulates the Existence of Monitor for Short Switching Delay and Prevention of DisplayPort's Windows Relocation Issue
- Serial RS-232 Switching Allows a Serial Device Shared among the 4 Computers
- USB 2.0 Switching Supports Most Popular USB Devices Including WACOM & Touch Screens
- 3.5mm Speaker and Microphone Switching Covers Most Audio Applications
- HDCP 1.4 Compliance Ensures Uninterrupted Video Playback
- Built-in AC Power Takes Less Place
- Supports Windows, Linux, Chrome O.S
- Also Available : Model with DisplayPort Only

* Mouse Roaming Technology Requires The O.S Supporting Absolute Mouse Coordinates

► Video Modes



Full-Screen



Quad-View



► Connection Pattern

Aerospace
2048x2048@60Hz

